

Core:- 44mm CF625 Premcor  
Configuration:- Single  
Action:- Single Action  
Vision Panel:- NA  
UKAS Test House :- SRL Technical Services Limited  
Certificate Number:- C/22478/T01  
Test Number:- 018

**Acoustic Rating:- Rw 33dB**

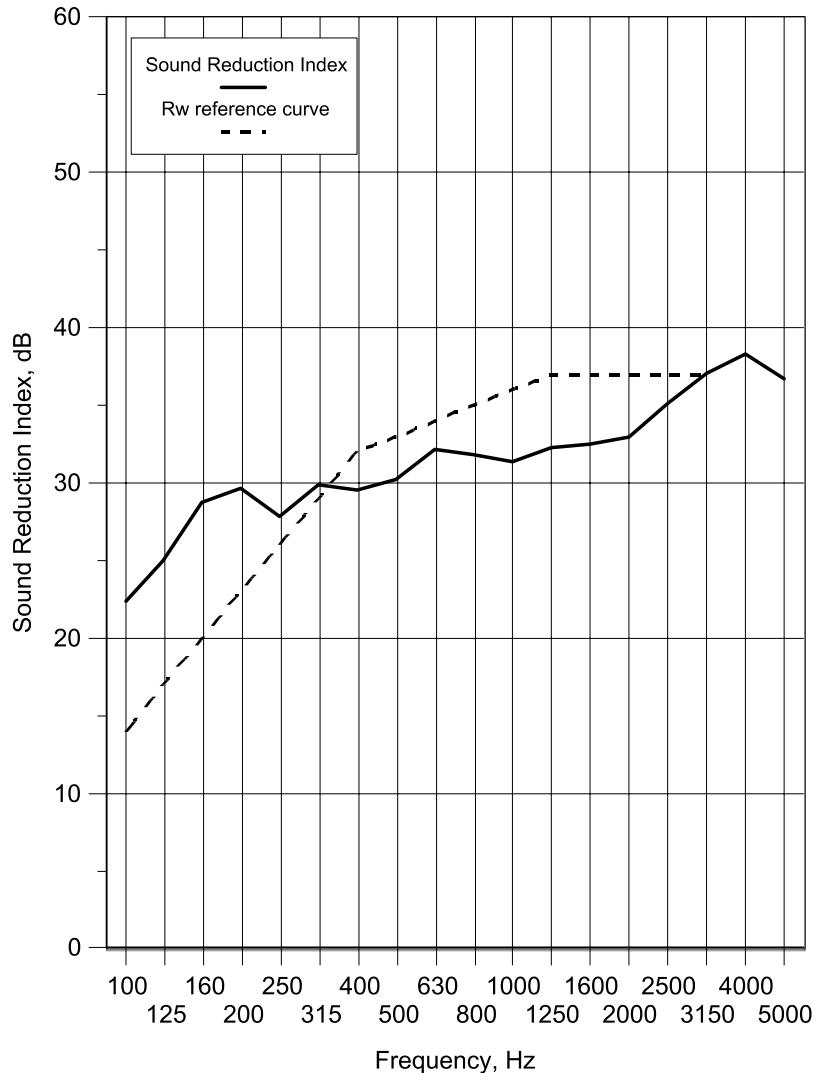
Please Note:-

Drawings are for indication of acoustic's only not fire, the correct configuration of fire seals must be added to achieve the required fire rating for the core.

Above drawings are indicative only

|                        |  |                         |               |                  |
|------------------------|--|-------------------------|---------------|------------------|
| <b>Test Number :</b>   | 18   | <b>Test Room:</b>       | <b>Source</b> | <b>Receiving</b> |
| <b>Client:</b>         | Midland Building Products                            | <b>Air temperature:</b> | 13.7 °C       | 13.7 °C          |
| <b>Test Date:</b>      | 23/04/2013   | <b>Air humidity:</b>    | 57 %          | 57 %             |
| <b>Sample height:</b>  | 2.1 m  | <b>Volume:</b>          | 115 m3        | 300 m3           |
| <b>Sample width:</b>   | 1.002 m  |                         |               |                  |
| <b>Sample weight:</b>  | 25.892 kg/m2   | <b>Air Pressure:</b>    | 1012 mbar     |                  |
| <b>Product</b>         | Single 44mm Premcore Light CF625                     |                         |               |                  |
| <b>Identification:</b> | Perimeter seal=FAS PER 35<br>Threshold seal=Top Plus |                         |               |                  |

| Freq<br>f<br>Hz     | Sound Reduction Index, dB |                 |
|---------------------|---------------------------|-----------------|
|                     | 1/3 Oct                   | 1/1 Oct         |
| 50+                 | 22.9                      | 19.6            |
| 63+                 | 22.6                      |                 |
| 80+                 | 16.5                      |                 |
| 100                 | 22.4                      | 24.7            |
| 125                 | 25.0                      |                 |
| 160                 | 28.7                      |                 |
| 200                 | 29.7                      | 29.0            |
| 250                 | 27.8                      |                 |
| 315                 | 29.9                      |                 |
| 400                 | 29.6                      | 30.5            |
| 500                 | 30.2                      |                 |
| 630                 | 32.2                      |                 |
| 800                 | 31.8                      | 31.8            |
| 1000                | 31.4                      |                 |
| 1250                | 32.3                      |                 |
| 1600                | 32.5                      | 33.4            |
| 2000                | 33.0                      |                 |
| 2500                | 35.1                      |                 |
| 3150                | 37.1                      | 37.3            |
| 4000                | 38.3                      |                 |
| 5000                | 36.7                      |                 |
| 6300+               | 39.6                      | 37.9            |
| 8000+               | 38.9                      |                 |
| 10000+              | 36.1                      |                 |
| Average<br>100-3150 | 30.5                      | Version<br>v2.0 |



Rating according to BS EN ISO 717-1:1997

Rw(C;Ctr)= **33 (-1;-2) dB**

\* shows measurement corrected for background

+ shows frequency beyond standard and not UKAS accredited